

Vortex Mixer

Vortex Mixers are ideal instruments for mixing to vigorous resuspension of cells, biological and chemical liquid components in tubes using an eccentric mechanism. They are widely used in life science, physical and chemical analysis fields.

MX-S Vortex Mixer

Features

- Touch operation or continuous mode
- Variable speed control from 0 to 2500rpm
- Used for various mixing applications with optional adapters
- Specially designed vacuum suction feet for body stable
- Robust aluminum-cast construction



Wide range of accessories

MX-E Economical Vortex Mixer

Features

- Touch operation
- Fixed speed at 3000rpm
- Compact size, cost-effective for the budget conscious laboratory

MX-F Vortex Mixer

Features

- Touch operation or continuous mode
- Fixed Speed 2500rpm
- Used for various mixing applications with optional adapters
- Specially designed vacuum suction feet for body stable
- Robust aluminum-cast construction

VT1.1 Standard top (Default)

for $\varnothing 30\text{mm}$ tubes and small vessels

Cat. No. 18900034



Specifications

	MX-S (Adjustable speed)	MX-F (Fixed speed)	MX-E (Fixed speed)
Voltage	110-120V/220-230V,50/60Hz	110-120V/220-230V,50/60Hz	100-240V,50/60Hz
Power	60W	60W	20W
Mixing motion	Orbital	Orbital	Orbital
Orbital diameter	4mm	4mm	4.8mm
Motor type	Shaded pole motor	Shaded pole motor	DC motor
Motor rating input	58W	58W	12W
Motor rating output	10W	10W	8W
Speed range	0-2500rpm	2500rpm	3000rpm
Speed display	Scale	--	-
Run type	Touch operation/Continuous	Touch operation/Continuous	Touch operation
Dimensions[W×H×D]	127×130×160mm	127×130×160mm	134×134×70.5mm
Weight	3.5kg	3.5kg	0.8kg
Permissible ambient temperature	5-40°C	5-40°C	5-40°C
Permissible relative humidity	80%	80%	80%
Protection class	IP21	IP21	IP21



VT1.2 Tube holding rod

used with tube adapters

Cat. No. 18900044

VT1.3 Universal top plate

Ø 100mm

Cat. No. 18900035



VT1.3.1 tube adapter

for 48 holes test tubes, Ø 6mm

Cat. No. 18900020



VT1.3.2 tube adapter

for 15 holes test tubes, Ø 10mm

Cat. No. 18900021



VT1.3.3 tube adapter

for 12 holes test tubes, Ø 12mm

Cat. No. 18900022



VT1.3.4 tube adapter

for 8 holes test tubes, Ø 16mm

Cat. No. 18900023



VT1.3.5 tube adapter

for 8 holes test tubes, Ø 20mm

Cat. No. 18900024



VT1.3.6 Platform pad

for <Ø 99mm tubes and small vessels

Cat. No. 18900043



Application of accessories

Accessories	Adjustable speed model (0-2500rpm)	
	Touch mode (High speed area)	Continuous mode (Low speed area)
VT1.1	Y	Y
VT1.2 + VT1.3.1	Y	
VT1.2 + VT1.3.2	Y	
VT1.2 + VT1.3.3	Y	
VT1.2 + VT1.3.4	Y	
VT1.2 + VT1.3.5	Y	
VT1.3 + VT1.3.6	Y	
VT1.3 + VT1.3.1		Y
VT1.3 + VT1.3.2		Y
VT1.3 + VT1.3.3		Y
VT1.3 + VT1.3.4		Y
VT1.3 + VT1.3.5		Y



VT1.3.7 vacuum chuck

made of rubber

Cat. No. 18900158



Microplate Mixer

Capable of holding single or double microplates, the compact shape of MX-M Microplate Mixer takes less bench space and makes storage easier. It is widely used in life sciences including microbiology, cell and molecular biology, immunology and biotechnology.

MX-M Microplate Mixers

Features

- A wide range of speed from 0 to 1500rpm
- Used for various mixing applications with optional adapters
- Maintenance-free brushless DC motor



Brushless DC motor



Wide range of accessories



PS1.2 Microplate clamp
Cat. No. 18900042



PS1.1 Universal top plate
Used with tube adapters
Cat. No. 18900067



VT1.3.1 tube adapter
for 48 holes test tubes, $\varnothing 6\text{mm}$
Cat. No. 18900020



VT1.3.2 tube adapter
for 15 holes test tubes, $\varnothing 10\text{mm}$
Cat. No. 18900021



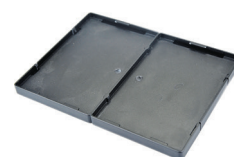
VT1.3.3 tube adapter
for 12 holes test tubes, $\varnothing 12\text{mm}$
Cat. No. 18900022



VT1.3.4 tube adapter
for 8 holes test tubes, $\varnothing 16\text{mm}$
Cat. No. 18900023



VT1.3.5 tube adapter
for 8 holes test tubes, $\varnothing 20\text{mm}$
Cat. No. 18900024



MXM-116
Double microplate clamps
Cat. No. 18900079

	MX-M
Shaking movement	Orbital
Orbital diameter	4.5mm
Max. shaking weight (with accessory)	0.5kg
Motor type	Brushless DC motor
Motor rating input	18W
Motor rating output	10W
Speed range	Single microplate: 0-1500rpm Double microplate: 0-1000rpm
Speed display	Scale
Voltage	100-240V, 50/60Hz
Power	20W
Dimensions	260×150×80mm
Weight	3kg
Permissible ambient temperature and humidity	5~40°C, 80%
Protection class	IP21



Rotators

SHCHEER rotators give gentle but effective mixing of biological samples held in 1.5mL to 50mL micro tubes, and are used in a variety of applications including immune precipitations, prevention of blood coagulation, latex diagnostics, etc.

MX-RD-Pro LCD Digital Rotator

Features

- Electronic adjustment of speed and time
- LCD display speed and time
- Speed range from 10 to 70rpm
- Rolling action, gives gentle but effective mixing
- Adjustable mixing angle from 0 to 90°
- A wide variety of accessories are available

MX-RD-E Economical Rotator

Features

- Provides gentle and effective mixing of biological samples
- Adjustable speed range from 0 to 80 rpm
- A wide variety of accessories are available



LCD display



Adjustable angle



Wide range of accessories



Specifications

	MX-RD-Pro	MX-RD-E
Motor type	DC motor	DC motor
Tilt angle	0-90°	0-90°
Speed range	10-70rpm	0-80rpm
Speed display	LCD	Scale
Timer display	LCD	Scale
Timer	1-1199min	-
Operation mode	Continuous / timer	Continuous
Voltage	100-240V, 50/60Hz	100-240V, 50/60Hz
Power	40W	20W
Dimensions [D×W×H]	280×210×300mm	300×220×310mm
Permissible ambient temperature and humidity	5~40°C, 80%	5~40°C, 80%
Protection class	IP21	IP21

Rotators



MX-RL-Pro LCD Digital Rotator

Features

- Electronic adjustment of speed and time
- LCD display speed and time
- Speed range from 10 to 70rpm
- Provides gentle but effective rolling
- A wide variety of accessories are available

MX-RL-E Economical Rotator

Features

- Provides gentle but effective rolling
- Adjustable speed range from 0 to 80 rpm
- A wide variety of accessories are available



LCD display



Wide range of accessories



Specifications

	MX-RL-Pro	MX-RL-E
Motor type	DC motor	DC motor
Speed range	10-70rpm	0-80rpm
Speed display	LCD	Scale
Timer display	LCD	Scale
Timer	1-1199min	-
Operation mode	Continuous / timer	Continuous
Voltage	100-240V, 50/60Hz	100-240V, 50/60Hz
Power	40W	20W
Dimensions [D×W×H]	220×510×260mm	150X530X190mm
Permissible ambient temperature and humidity	5~40°C,80%	5~40°C,80%
Protection class	IP21	IP21



Disk Accessories Type-1

Used for MX-RD-Pro
for 1.5mL x 60 centrifuge tubes holder

Cat. No.

18900160

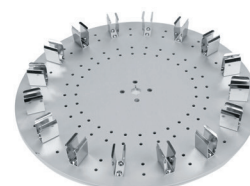


Disk Accessories Type-2

Used for MX-RD-Pro
for 15mL x 16 centrifuge tubes holder

Cat. No.

18900161

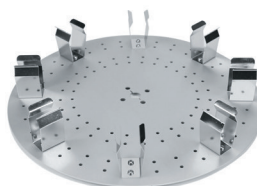


Disk Accessories Type-3

Used for MX-RD-Pro
for 50mL x 8 centrifuge tubes holder

Cat. No.

18900162



Disk support rods

4 pcs in a group
use with disk accessories

Cat. No.

18900140

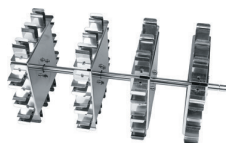


Rotisserie Accessory Type-1

Used for MX-RL-Pro, for 1.5mL x 48
centrifuge tubes held horizontally

Cat. No.

18900142



Rotisserie Accessory Type-2

Used for MX-RL-Pro, for 15mL x 24
centrifuge tubes held horizontally

Cat. No.

18900143



Rotisserie Accessory Type-3

Used for MX-RL-Pro, for 50mL x 24
centrifuge tubes held horizontally

Cat. No.

18900144



Rotisserie Accessory Type-4

Used for MX-RL-Pro, for 1.5mL x 32
centrifuge tubes held vertically

Cat. No.

18900145



Rotisserie Accessory Type-5

Used for MX-RL-Pro, for 15mL x 16
centrifuge tubes held vertically

Cat. No.

18900146



Rotisserie Accessory Type-6

Used for MX-RL-Pro, for 50mL x 16
centrifuge tubes held vertically

Cat. No.

18900147



Plastic Clips

Used with MX-RL-E/MX-RD-E
Disk/Rotisserie accessory, for
50mL, 15mL and 1.5mL
centrifuge tubes





Tube Roller

MX-T6-Pro LCD Digital Tube Roller

Features

- LCD displays the speed and time
- Speed range of 10-70rpm
- Six roller design for gentle rolling and easy to clean
- Continuous or timer operation

SHCHEER tube rollers provide a gentle and highly efficient rolling motions, ideal for mixing blood samples, viscous substances and liquid-solid suspensions. Used in a variety of applications, such as the prevention of blood coagulation and immune precipitation, etc.



LCD display



Timer

MX-T6-S Tube Roller

Features

- Speed range of 0-70rpm
- Six roller design for gentle rolling and easy to clean



Specifications

	MX-T6-Pro	MX-T6-S
Amplitude	24mm	24mm
Motor type	DC motor	DC motor
Rocking motion	Rocking and rolling	Rocking and rolling
Amplitude	24mm	24mm
Max. load capacity	4kg	4kg
Number of rollers	6	6
Roller size[length]	280mm	280mm
Speed range	10-70rpm	0-70rpm
Speed display	LCD	Scale
Timer	Yes	-
Timer display	LCD	-
Time setting range	1-1199min	-
Operation mode	Continuous / timed	Continuous
Voltage	100-240V,50/60Hz	100-240V,50/60Hz
Power	30W	25W
Dimensions [D×W×H]	450×260×120mm	450×260×120mm
Weight	5.1kg	4.5kg
Permissible ambient temperature and humidity	5~40°C,80%	5~40°C,80%
Protection class	IP21	IP21